

## Pelvic congestion syndrome (PCS): connection with internal iliac artery (IIA)

The goal in this case is to embolize the reservoir in order to achieve a distal embolization (Fig. 53). The steps here are to first put one or two coils at the proximal port, go through the coils with the microcatheter, inject the glue from the distal port, and ask the patient for Valsalva while removing the catheter until we reach the coils.

In women varices are normally very large and the cast of glue in case of reflux can be less easily controlled so we use the coils not to occlude but to protect. A possible reflux would be trapped by the coils.

### PCS: connection with IIA

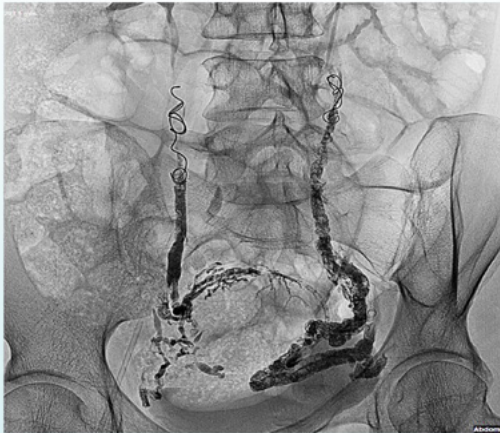


Figure 53